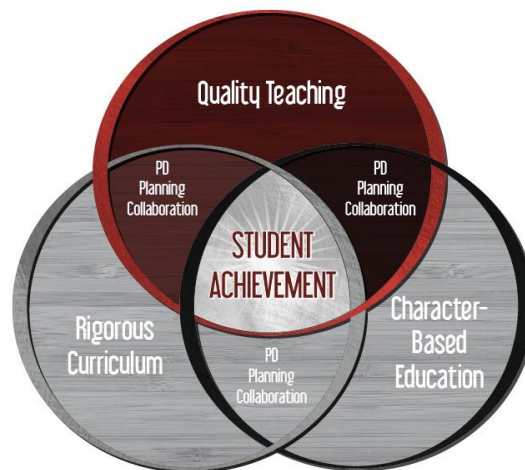


CENTENNIAL BRAVES CENTENNIAL

Return to Learn Plan

Revised 8/20/2020



MISSION

Within a challenging and joyful learning environment where relationships come first, Centennial Middle School will leverage quality teaching, character education, and a rigorous curriculum to inspire a lifetime of learning.

Table of Contents

Table of Contents	2
Principal Message	4
Learning Models	5
Hybrid In-Person Learning	5
Learn From Home (100% Online Learning)	5
Cohorts	6
Cohorting	6
Secondary Cohorts	6
Cohort Schedule*	7
Bell Schedules	8
Hybrid In-Person Bell Schedule	8
Hybrid Remote Learning (At Home) *** Difference in schedule is no AM Study Hall.	8
Student Orientation	9
Grade Level Orientation	9
Online Registration	9
Schedules	10
Sports Physicals and Payments	10
Planners	10
Fee Payment	10
Arrival	10
Universal Screening Locations	11
Departure	12
Social Distancing	12
Face Masks	12
Special Considerations / Exceptions	12
Mask Breaks	12
Lunch	12
Recess	13
Physical Activity	13
Movement	13
Visitors	13

	3
Lunch/Recess	13
Attendance	13
Grades	14
Student ID with Barcode	14
Lockers	14
School Supplies	14
In-Person Students	14
Online Students	14
Drinking Fountains	14
Special Education Services	14
Gifted and Talented Education (GATE)	15
Culturally and Linguistically Diverse (CLD)	15
Mild and Moderate Needs (MMN)	15
District Communication Classroom (DCC)	15
Significant Severe Needs (SSN)	15
Sports	15
Band	15
Centennial Special Electives (Robotics, Engineering I & II, Drama, and Yearbook)	16
Contacts	16
Counselors	16
Question and Answer	17

Principal Message

**** 8/20/20

Due to changing COVID 19 requirements Centennial has updated our return to learn plan. These changes have been completed to improve safety for your students. As you review this updated plan all changes have been highlighted in yellow for your reference.

Dear Centennial Students and Parents,

Centennial is very excited for this upcoming school year and getting you all back to learning. Learning this year is going to be very different from past school years. As a staff we have been working very hard this summer to be better prepared for instructing during the COVID 19 pandemic. Centennial teachers and Administrators have been receiving professional development this summer in blended and remote learning. When we went remote on March 11th, we did not envision nor were we prepared for teaching from home. Centennial is prepared for this year and we will do our best to provide the instruction you have come to expect from us. This return to learn plan is designed to communicate what learning will be like at Centennial. We tried to answer all of the questions about what the school day will look like. As with anything related to Covid 19, these plans could change due to our school, district, and state needs.

Sincerely,
Joe Simo

Learning Models

Hybrid In-Person Learning

Students will take classes on a hybrid schedule: four classes per day plus Crew. Students will be designated to "A" week for last name A - K or "B" week for last name L - Z. "A" week students will be in school for a traditional, five-day week, while "B" students are remote. The next week, "B" students will be in school for a traditional, five-day week, while "A" students are remote.

On remote weeks, students will maintain the same schedule as in-person learning: Students will virtually meet with instructors at the same time as when in-person at the beginning of class, following their in-person schedule. Then students will work independently for the remainder of the class time. Teachers will set aside time daily to answer questions and to make clarifications, which will accommodate independent learning for remote students. Teachers will communicate with their students what that time frame will be.

In-person Week Students will...	Remote Week Students will...
See teachers every day	"See" teachers virtually every day at the beginning of class.
Attend four - 86 minute classes a day	Complete independent work/learning for each class.
Attend Crew - 30 minutes a day	Participate in virtual Crew activity posted in Google Classroom - 30 minutes on Monday & Friday
Attend school Monday - Friday	Learn from home Monday - Friday

Learn From Home (100% Online Learning)

Students will learn from home (100% online), participating in four classes per day, with Crew groups meeting twice a week on Monday & Friday. Both synchronous (at the same time) and asynchronous (at different times) learning will occur in the form of video-conferencing, office-hours, and tutoring (online and/or face-to-face).

Cohorts

Cohorting

For the purpose of hybrid learning, a cohort is defined as an “A” group last names A - K or “B” group last names L - Z of students in a particular grade level. Each teacher will have an “A” group of students and a “B” group of students. At any given time, only half of the student population will be on campus. Centennial will strive to maintain students in cohorts to facilitate contact tracing in the event of a COVID positive or probable positive case in our schools. Cohorting allows Centennial to limit spread of COVID-19 across cohort groups and limit the incidences of entire school closures and the subsequent transition to entirely remote operations. At any time, a cohort could transition to 100% remote learning for a minimum 14-day period of quarantine, if one positive COVID case is determined in the cohort.

Secondary Cohorts

At the secondary level, there is an assumption that there is a higher risk of contagion spread by children over the age of 10. Even with that understanding, cohorting numbers will be larger in middle and high school due to scheduling constraints.

Cohort Schedule*

1st Semester			2nd Semester		
Weeks	In-School	Remote	Weeks	In-School	Remote
8/31-9/04	B	A	1/5-1/8	A	B
9/8-9/11	A	B	1/11-1/15	B	A
9/14-9/18	B	A	1/18-1/22	A	B
9/21-9/25	A	B	1/25-1/29	B	A
9/28-10/2	B	A	2/1-2/5	A	B
10/5-10/9	A	B	2/8-2/12	B	A
10/12-10/16	B	A	2/15-2/18	A	B
10/19-10/20	A	B	2/23-2/26	B	A
10/26-10/30	B	A	3/1-3/5	A	B
11/2-11/6	A	B	3/08-3/10	B	A
11/9-11/13	B	A	3/15-3/19	A	B
11/16-11/20	A	B	3/22-3/26	B	A
11/30-12/4	B	A	4/5-4/9	A	B
12/7-12/11	A	B	4/12-4/16	B	A
12/14-12/16	B	A	4/19-4/23	A	B
			4/26-4/29	B	A
			5/3-5/7	A	B
			5/10-5/14	B	A
			5/17-5/21	A	B
			5/24-5/26	B	A

*Schedule subject to change, dependent on COVID progression or regression and subsequent full-time, in-school learning.

Centennial Bell Schedules 2020/2021

Hybrid In-Person Bell Schedule

Monday, Tuesday, Thursday, Friday					
6 th Grade		7 th Grade		8 th Grade	
8:15-8:32	Study Hall	8:15-8:32	Study Hall	8:15-8:32	Study Hall
8:36 – 10:02	Class Period 1	8:36 – 10:02	Class Period 1	8:36 – 10:02	Class Period 1
10:06–11:30	Class Period 2	10:06 – 11:00	Class Period 2	10:06 – 11:30	Class Period 2
11:30-12:06	Lunch/Recess	11:00-11:30	Lunch/Recess	11:34-12:06	CREW
12:10-12:40	CREW	11:34-12:06	Class Period 2	12:10-12:40	Lunch/Recess
12:44-2-10	Class Period 3	12:10-12:40	CREW	12:44-2:10	Class Period 3
2:14-3:40	Class Period 4	12:44-2:10	Class Period 3	2:14-3:40	Class Period 4
		2:14-3:40	Class Period 4		

Wednesday					
6 th Grade		7 th Grade		8 th Grade	
8:15-8:32	Study Hall	8:15-8:32	Study Hall	8:15-8:32	Study Hall
8:36-9:47	Class Period 1	8:36-9:47	Class Period 1	8:36-9:47	Class Period 1
9:51-11:02	Class Period 2	9:51-10:30	Class Period 2	9:51-11:02	Class Period 2
11:02-11:38	Lunch/Recess	10:30-11:02	Lunch/Recess	11:06-11:38	CREW
11:42-12:12	CREW	11:06-11:38	Class Period 2	11:42-12:12	Lunch/Recess
12:16-1:26	Class Period 3	11:42-12:12	CREW	12:16-1:26	Class Period 3
1:30-2:40	Class Period 4	12:16-1:26	Class Period 3	1:30-2:40	Class Period 4
		1:30-2:40	Class Period 4		

Hybrid Remote Learning (At Home) *** Difference in schedule is no AM Study Hall.

Monday, Tuesday, Thursday, Friday					
6 th Grade		7 th Grade		8 th Grade	
8:36 – 10:02	Class Period 1	8:36 – 10:02	Class Period 1	8:36 – 10:02	Class Period 1
10:06–11:30	Class Period 2	10:06 – 11:00	Class Period 2	10:06 – 11:30	Class Period 2
11:30-12:06	Lunch	11:00-11:30	Lunch	11:34-12:06	Lunch
12:10-12:40	CREW -	11:34-12:06	CREW	12:10-12:40	CREW
12:44-2-10	Class Period 3	12:10-12:40	Class Period 2	12:44-2:10	Class Period 3
2:14-3:40	Class Period 4	12:44-2:10	Class Period 3	2:14-3:40	Class Period 4
		2:14-3:40	Class Period 4		

Wednesday					
6 th Grade		7 th Grade		8 th Grade	
8:36-9:47	Class Period 1	8:36-9:47	Class Period 1	8:36-9:47	Class Period 1
9:51-11:02	Class Period 2	9:51-10:30	Class Period 2	9:51-11:02	Class Period 2
11:02-11:38	Open	10:30-11:02	Lunch/Recess	11:06-11:38	Open
11:42-12:12	Lunch	11:06-11:38	Class Period 2	11:42-12:12	Lunch
12:16-1:26	Class Period 3	11:42-12:12	Open	12:16-1:26	Class Period 3
1:30-2:40	Class Period 4	12:16-1:26	Class Period 3	1:30-2:40	Class Period 4
		1:30-2:40	Class Period 4		

Student Orientation

Hybrid in-person and learn from home students will be required to participate in an orientation. Orientation for students will be divided by grade level teams. On a student's assigned day, he/she will receive a class schedule, iPad, and Google account information. Tech fees should be paid prior to receiving an iPad. Time will be given for students to become familiar with their iPads and ensure successful Google account sign-in. Students will also visit their classrooms and teachers and learn expectations for hybrid in-person/remote and learn from home education. In-person expectations will cover morning health screenings, lunch and recess, transitioning between classes, etc. **Due to bussing, in-person/hybrid students will attend all day.** Learn from home orientation will cover tutoring, schedule, and use of technology.

Orientation for our 100% online students will take place in the Auxiliary Gym next to our main office. Students will enter through that gym door and be screened as they arrive. Students will be picked up at 3:00 in the main parking area, as the bus loop is reserved for bus transportation at that time.

Grade Level Orientation

Cohort >	6A (A-K)	6B (L-Z)	7A (A-K)	7B (L-Z)	8A (A-K)	8B (L-Z)	Learn from Home (100% Online)
Thurs 8/27	@ school orientation	@ school orientation	NOT on campus	NOT on campus	NOT on campus	NOT on campus	NOT on campus
Friday 8/28	NOT on campus	NOT on campus	@ school orientation	@ school orientation	NOT on campus	NOT on campus	@ school orientation 1:00 – 3:00
Monday 8/31	NOT on campus	NOT on campus	NOT on campus	NOT on campus	@ school orientation	@ school orientation	Online classes begin
Tuesday 9/1	NOT on campus Begin 1st week of remote classes	Begin 1 st week of classes on campus	NOT on campus Begin 1st week of remote classes	Begin 1 st week of classes on campus	NOT on campus Begin 1st week of remote classes	Begin 1 st week of classes on campus	Online

Online Registration

Centennial will be moving to an online registration process this year. The goal is to limit the amount of adults entering the school to keep our students safe before classes begin. Reduce parents and students from waiting in long lines for hours. To make online registration successful we will need to have parents login to their Parent portal. For support to create or access your Parent Portal you may contact Centennial's counseling office at (970) 249 - 2576 or Tamra.elwell@mcsd.org

Schedules

Schedules will be ready for students on their orientation day. The schedules will also be located on the online Infinite Campus program, Parent Portal. This will allow you to see your student's schedule. Your student will find out the assigned cohort on their orientation day. Cohort and scheduling requests will have to go through the counseling office.

Sports Physicals and Payments

Sports physicals can be dropped in a box outside the office starting August 24th. Payments for sports will happen when sports commence.

Planners

We encourage all students to have a planner to help with organization of class assignments and cohort weeks. Planners are \$7.00 and will be delivered to your child's cohort teachers. Purchases can be made online during registration.

Fee Payment

Centennial has greatly reduced fees with respect to our families because of COVID. The fees for this year are non-refundable as each program relies on purchasing items early in the year and will not be able to return instructions materials after purchase.

- Technology Fee-\$30
- Encore Fees-\$30
- Crew Fee-\$5
- School Planner Fee-\$7.00 (optional)
- Band Fee- \$10.00 (band students only)

Fees can be paid on Infinite Campus. There may be a small fee for this convenience. If you want to pay with cash, please come to the office between August 24 to August 31st.

Arrival

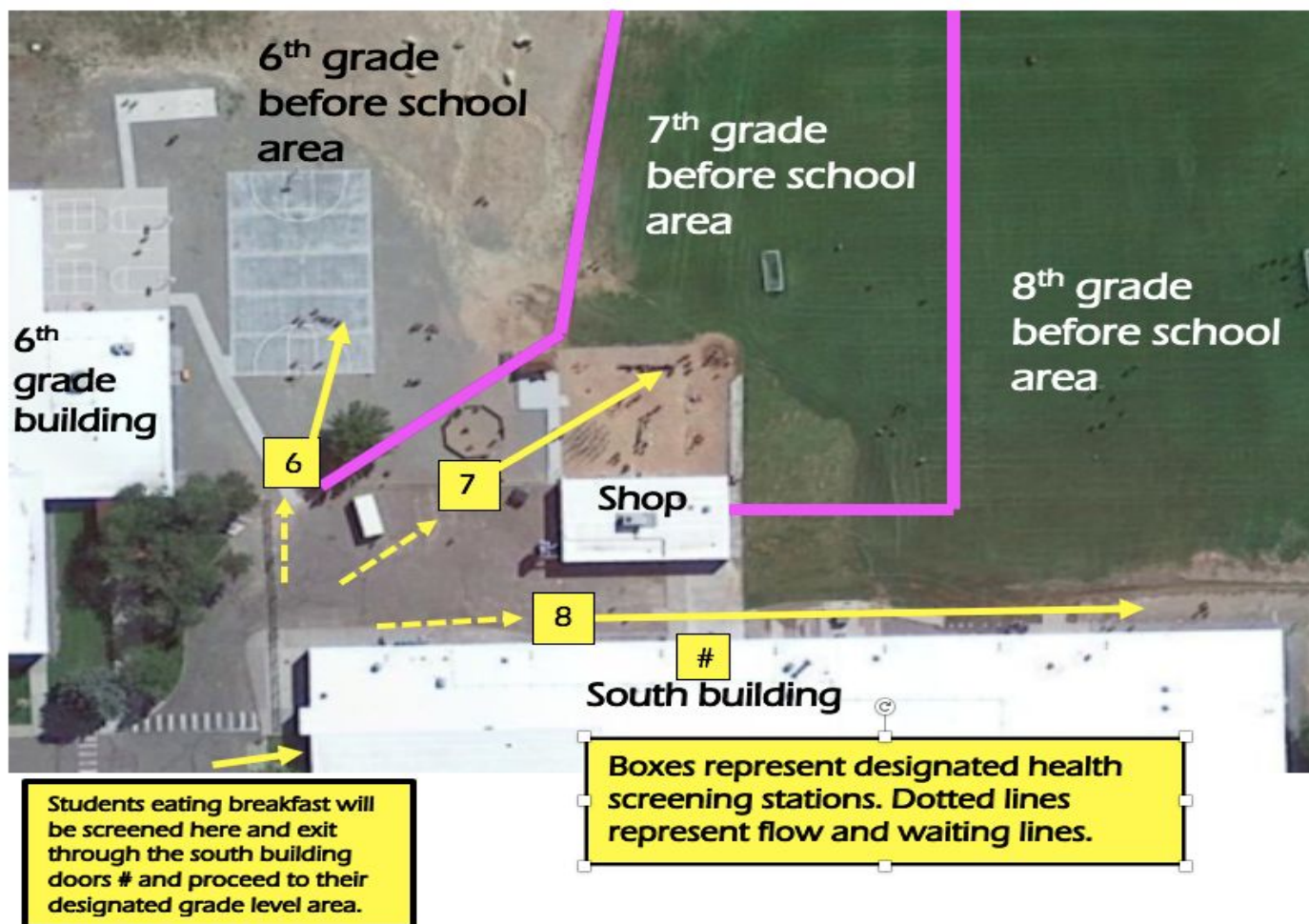
We are asking that families do a health screening at home prior to coming to school. Please ask your child if he/she 1) has a worsening cough, 2) shortness of breath, and/or 3) a temperature of 100.4 or higher. If your child answers yes, please keep them at home and contact the office.

In addition, all students and staff will be screened prior to entering school each day. This will include a touchless thermometer and three symptom questions:

1. Do you have a new or worsening cough?
2. Do you have new or worsening shortness of breath?
3. Have you had fever reducing medication within the last 24 hours?

Anyone with a fever, defined as a temperature of 100.4 or greater, will be screened again within 3-5 minutes to allow for confirmation of a correct temperature. If the temperature remains high, procedures are in place to safely and comfortably quarantine students until parents/guardians can return to school to pick them up.

Universal Screening Locations



Departure

At the end of the day, students will be expected to leave the building and campus as soon as they are dismissed. Students who have a school-sponsored activity, or are required to stay after school will report to that designated area. No loitering in the halls, building, or on campus. The expectation is that students will clear the halls by 3:45 P.M. (2:45 Wednesdays).

- Students who ride the bus are expected to wait in their classroom until their bus number is called over the intercom.
- When students get a ride from a family member, they will need to be picked up in the big parking lot located off of Python & South 5th streets.
- Students who are being picked up after 3:50 will be asked to make arrangements for an off- campus meeting area to meet their ride.

The loop just outside the main office is reserved for busses from 7:40-8:10 am and 3:30-4:15 pm (2:30-3:15 on Wednesdays). Please respect this designation.

Social Distancing

Centennial will practice social distancing in buildings, per District guidelines, of three to six feet, as much as possible. Students will be required to wear a mask when in classrooms and in hallways.

All students are encouraged to wash their hands regularly throughout the day. Hand sanitizing stations have been installed at Centennial. Students will be expected to use hand sanitizer each time they enter a classroom. Due to allergies and sensitivities students may bring and use their own hand sanitizer.

Face Masks

Students in sixth - eighth grades are required to wear a cloth face covering upon campus arrival, throughout the school day when moving about the building, during class, and dismissal. Masks will need to cover a student's mouth and nose. Plastic face shields cannot be worn in place of a cloth face mask. If a student chooses to wear a plastic face shield, a cloth face mask must be worn underneath the shield. Centennial will never require a student to lower his/her mask.

Special Considerations / Exceptions

Mask Breaks

Teachers will designate a place in their own classrooms where students can have a safe space to remove their masks and have "mask breaks".

Lunch

At lunch time, students will wear masks to the cafeteria through the lunch line to their seat. Students are then allowed to remove their masks. Social distancing of at least three feet will be encouraged during these times. **As an additional safety measure, "A" and "B" cohorts will be separated.**

Recess

During lunch recess students will need to wear their masks while socializing with their friends. If participating in moderate-to-vigorous physical activity masks may be removed. These activities will need to keep students socially distanced.

Physical Activity

Centennial recognizes that during periods of moderate-to-vigorous physical activity (PE) students will need to remove their masks. Centennial expects those activities to take place outdoors whenever possible.

Movement

Transitions between classes will focus on limiting the in-building movement to periods of less than five minutes at a time. During passing periods, students will wear masks in the hallways as they proceed to their next class. Social distancing will be practiced. Hallways will have two directions of movement flow. Students will need to stay on the correct side of the hallway while transitioning to the next room. During this time, students will be able to use the restrooms and fill water bottles.

Visitors

Visitors will be limited and by appointment only. Visitors must pass a health screening and wear a face mask. Parents who pick up their child during the school day will remain in the office vestibule or outdoors as much as possible.

Lunch/Recess

Students will be eating lunch in the cafeteria with their grade-level cohort. Students will be encouraged to practice social distancing and remain three feet apart, while seated and in line to purchase their lunch. Six students will be able to sit at each table, with an outdoor eating option available when the weather permits.

Students will have a barcode ID which can be scanned for purchasing lunch. Tables will be cleaned and sanitized between cohort lunch periods.

Students will have recess outside, with their grade-level cohort.

Attendance

Daily attendance will remain consistent, whether students are hybrid in-person/remote or learning from home. Attendance will be taken for every class period either in-person and remote within the first 10 minutes.

Grades

All in-person and remote assignments will be graded and entered into Infinite Campus. Parents and students will be able to access missing assignments and letter grades using their Infinite Campus Portal. These grades will be updated weekly.

90% - 100% = A

80% - 90% = B

70% - 80% = C

60% - 70% = D

0% - 60% = F

Student ID with Barcode

All students will be issued a student ID with a barcode, eliminating the need for unnecessary contact throughout the school day. The ID will be used for health screening, lunch purchases, and library check-out. The ID must be worn at all times. If a student loses his/her ID, a replacement fee will be assessed.

Lockers

Students will not have access to a locker for storing their personal belongings. They will also not have access to PE or athletic lockers unless guidance from CHSAA states otherwise.

School Supplies

In-Person Students

In-person students should purchase the supplies listed on published school supply lists available at local retailers and on the MCSD website. These supplies will not be collected by teachers and should not be shared. Supplies will need to be brought to class as directed by staff during the first week of school.

Online Students

Online students should wait to purchase supplies until meeting with teachers during their orientation (Friday, August 28, 1:00p.m. - 3:00 p.m.).

Drinking Fountains

Students are encouraged to bring water bottles to school. Bottle filling stations will be accessible for all students. Drinking fountains will not be accessible and turned off for student/staff use.

Special Education Services

All students with individualized educational programs (IEP) will be given instruction based on their IEP goals and be given instruction based on their IEP goals and be under the direction of a certified special education teacher. All IEP service minutes will be met.

Gifted and Talented Education (GATE)

GATE programming will be available to students in a 100% digital/virtual environment in order to provide the greatest flexibility. Students will be able to access their GATE content during the learn at home week). GATE facilitators will use Google Classroom and Google Sites to provide instruction to students. Please contact Mrs. Kruis for more information. - Beth.Kruis@mcsd.org

Culturally and Linguistically Diverse (CLD)

Students with culturally and linguistically diverse plans will receive support from the trained grade level teachers as determined by need for support.

Mild and Moderate Needs (MMN)

MMN students will be part of their grade-level cohort, following the hybrid in-person and remote student guidelines.

District Communication Classroom (DCC)

DCC will be their own cohort and follow their own daily schedule. Please contact Mrs. Jenkins for more information. - Katie.Jenkins@mcsd.org

Significant Severe Needs (SSN)

SSN students will be their own cohort and follow their own daily schedule. Please contact Mrs. Roome for more information. - Karoline.Roome@mcsd.org

Sports

Centennial Athletics will follow the guidance from MCSD and CHSAA. MCSD is taking COVID data with sports very seriously. All MCSD middle school sports are taking a pause as we watch the COVID data in our community. We are working on a plan that we will publish by September 16th.

Band

Centennial is very proud of our musical programs and the offerings that students can receive in the performing arts. Due to cohorting it is not possible to offer three grade level bands in person this year. Band will be different. One grade will get band in-person during the school day while the other two grade level band classes will get virtual instruction after our 3:40 bell. For our beginning band students in 6th grade they will have an in-person band the first semester. Our veteran band students in 7th and 8th grade will have virtual instruction after school. Third quarter, 7th grade will attend band in-person during the school day. Fourth quarter, 8th grade will attend band in-person during the school day. This schedule will allow us to keep band instruction going without having students miss instruction during the year. Jazz band mixes grade level students and will not be held at the start of the school year due to cohorting requirements. Centennial will review the Jazz band class before the start of 2nd and 3rd quarter to determine if it will be safe to offer the class.

BAND	Q1	Q2	Q3	Q4
6th	In-person	In-person	Virtual 4:30 - 5:15pm	Virtual 4:30 - 5:15pm
7th	Virtual 4:30 - 5:15pm	Virtual 4:30 - 5:15pm	In-person	Virtual 5:15 - 6:00pm
8th	Virtual 5:15 - 6:00pm	Virtual 5:15 - 6:00pm	Virtual 5:15 - 6:00pm	In-person

Centennial Special Electives (Robotics, Engineering I & II, Drama, and Yearbook)

At Centennial, we have special electives that our students and families have to come to love. With moving to a four period class day and not being able to rotate our classes as we have done in the past, these special electives are not going to be offered during the school day. Our amazing staff are looking at ways to offer these electives as clubs before and after school. These clubs will be limited to meet the social distancing and cohorting requirements of our school district. A fee will be collected for students who would like to participate. A flier will be released to students after the completion of the first three weeks of school, if it will be safe to offer the classes.

Contacts

If you have any questions about this learning plan, please feel free to contact Centennial's office at (970) 249-2576.

Counselors

Matt Piquette
Jessica Griffin

Matthew.Piquette@mcsd.org
Jessica.Griffin@mcsd.org

Question and Answer

What is a cohort at Centennial?

- A cohort is a half of a grade of students and four teachers assigned to instruct them.

How will I know what team and cohort my student will be in?

- Cohorts will be broken down by last names: cohort "A" will be last names A-K and Cohort "B" will be last names L-Z. All secondary school cohorts will be aligned to accommodate for siblings. The cohort can be found on the student's schedule that they receive on orientation day.

What happens if my student's cohort has a positive COVID test?

- That cohort and their teachers will move to remote learning for 14 days or more.

Can I change my student's cohort?

- Cohort changes can take place up to the orientation date. You will need to put your request into our school counselors.

My child is not feeling well. What should I do?

- Please keep your child home and follow the District COVID 19 guidance. We would like for your student to feel better and make sure that a cohort of students does not have to go remote learning for 14 days or more.

Can I change my mind on the learning model?

- Yes, you change your mind on the learning model, if there is room available in that model. Staffing is currently being moved around to accommodate the learning models requested. Once the first day of class starts, changes will have to wait to be considered until the next quarter.

Does my student get to choose his/her electives?

- No, electives have been turned into specials for this year. Cohorting students will not allow for more than one grade to attend a special at a time.

Will my student's special change?

- Yes. Special classes will change. One special teacher will be assigned to a cohort each quarter. The special teacher will stay with the cohort for in-person and remote learning. Specials are PE, Art, Technology, Family and Consumers Studies, Shop, Choir, and Band.

Will band be my child's only special?

- Band will be your child's only special during the quarter in which they have in-person band. Sixth grade will have in-person band during first and second quarters, and then will have two different specials for the rest of the year. Seventh grade will have band in-person during third quarter and will have three different specials throughout the year. Eighth grade will have in-person during fourth quarter and will have three different specials throughout the year.

How do I request a specific week remote for my child?

- Contact our school counselors and they can assist you.

Will my student be required to stay in one classroom all day?

- No. Students will move from class to class in the building during passing periods and for lunch.

Will the dress code still be enforced at school?

- Yes. Appropriate dress code is required at school. See school policy JICA.

Will my student be required to wear a mask all day while attending school?

- Students must wear a mask while in the building and while being screened before entry. There will be a mask break area in each classroom where students can remove their mask for short periods of time. Students do not need to wear a mask when outside during recess and other classroom activities when social distancing can be maintained.

What if I don't want my student to wear a mask?

- Masks are mandatory while attending in-person learning at school. You may sign your student up for online learning if they are unable to wear a mask.

What time will my students need to check in at school for screening?

- Screenings will be performed from 7:40 to 8:10. After that time, the student will need to report to the office for screening before they can be admitted to class.

Can my student carry a backpack?

- Yes. Without lockers, students will need to carry supplies between classes.

Will dressing out be required for PE?

- No. If a student has PE as a special, clothing appropriate for physical activity should be worn to school (i.e. shoes appropriate for running, comfortable shirts, and pants, etc.).

What if my student can't be at orientation?

- It will be hard to accommodate anyone who doesn't make it to orientation. Please plan to attend and contact the main office if you need to make emergency arrangements.

What does orientation day look like?

- Refer to the "Student Orientation" section outlined on page 9.
- Students will attend school following our bell schedule from 8:15 am to 3:40pm.

Will the busses be running for orientation?

- Yes, the busses will be running normal hours on orientation days.

Will parents be able to meet the teachers?

- Historically, Centennial has a back to school night prior to the start of the school year. Due to COVID-19, we are limiting the number of people in the building. You can refer to teacher websites for more information or contact them directly.

Will there be an orientation for parents?

- Normally, Mr. Simo hosts a time to welcome parents and introduce them to Centennial. This year, Mr. Simo will be releasing a recording of the parent orientation presentation. You can find it on our school website and on our Facebook page.

When will I be able to pay fees online?

- Fees can be viewed and paid once the schedules are finalized. Our counselors are working to make the needed changes to student schedules to meet COVID-19 requirements. Once the student

schedules are completed, Centennial will communicate to families that they are available and registration is open.